

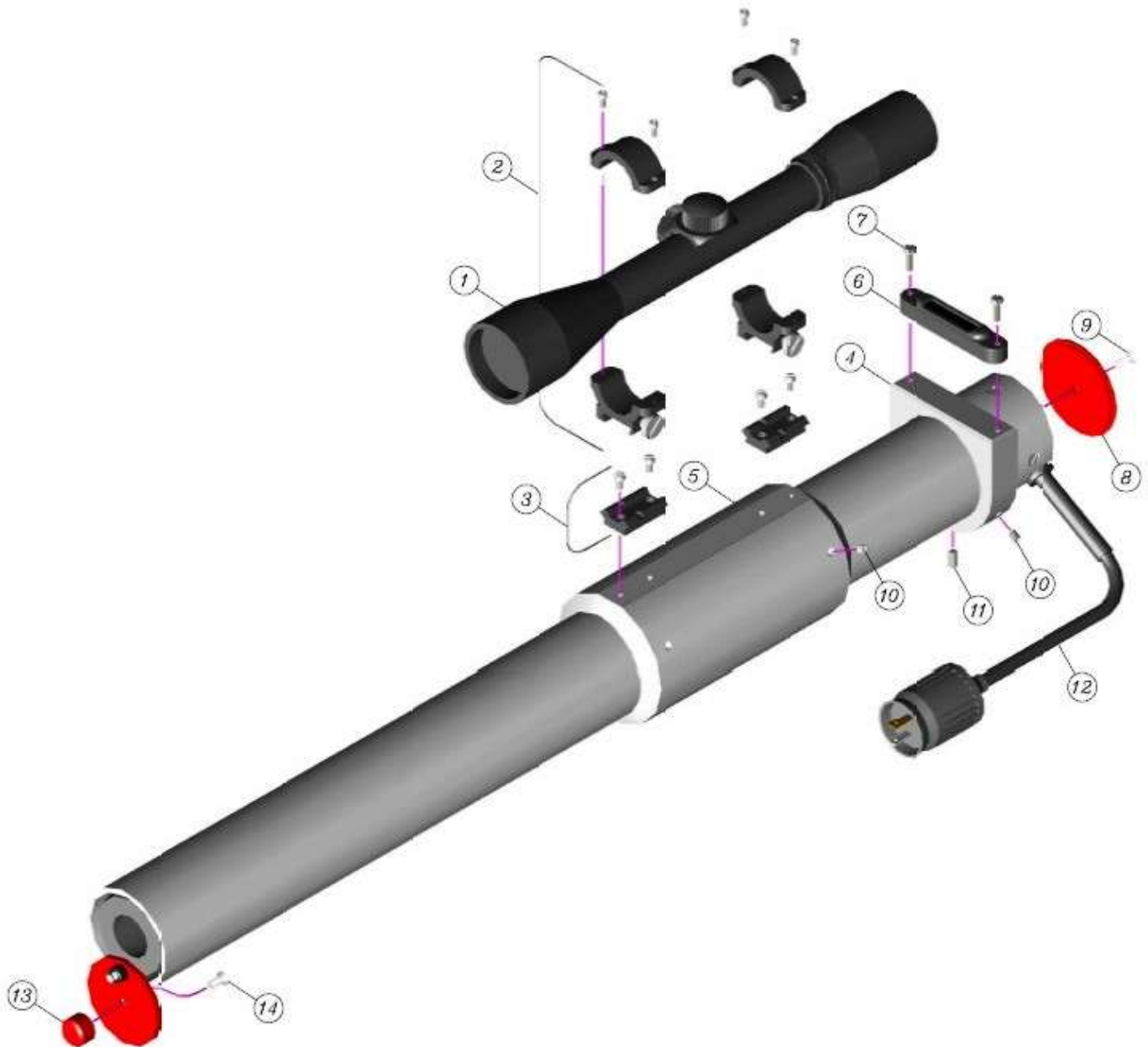
RS4000 Laser Kit---Part # 40603



40603 Parts List

<u>Item No.</u>	<u>Part Number</u>	<u>Description</u>
1	40530	Laser-Cannon w/ Scope
2	40531	Key Box / Power Cable
3	40532	Case w/ Inserts

RS4000 Laser/Cannon---Part # 40530



40530 Parts List

Item No.	Part Number	Description
1	728124	Scope Assembly
2	728119	Scope Mount (Set of 2)
3	728120	Top Mount Base
4	729880	Vial Mount Ring
5	40069	Scope Mount Tube
6	40261	Vial Assembly
7	Ref Only	6-32 x 5/8" Pan Head Slot Screw
8	729741	Rear Cover Plate
9	Ref Only	6-32 x 3/4" Flat Head Slot Screw
10	Ref Only	10-24 x 3/16" Knurled Tip Set Screw
11	Ref Only	10-24 x 1/2" Knurled Tip Set Screw
12	743672	Power Cable Assembly
13	742905	Attenuator Knob
14	Ref Only	8-32 x 3/8" Flat Head Slot Screw