



RS4000 Panel Ground Strap Kit

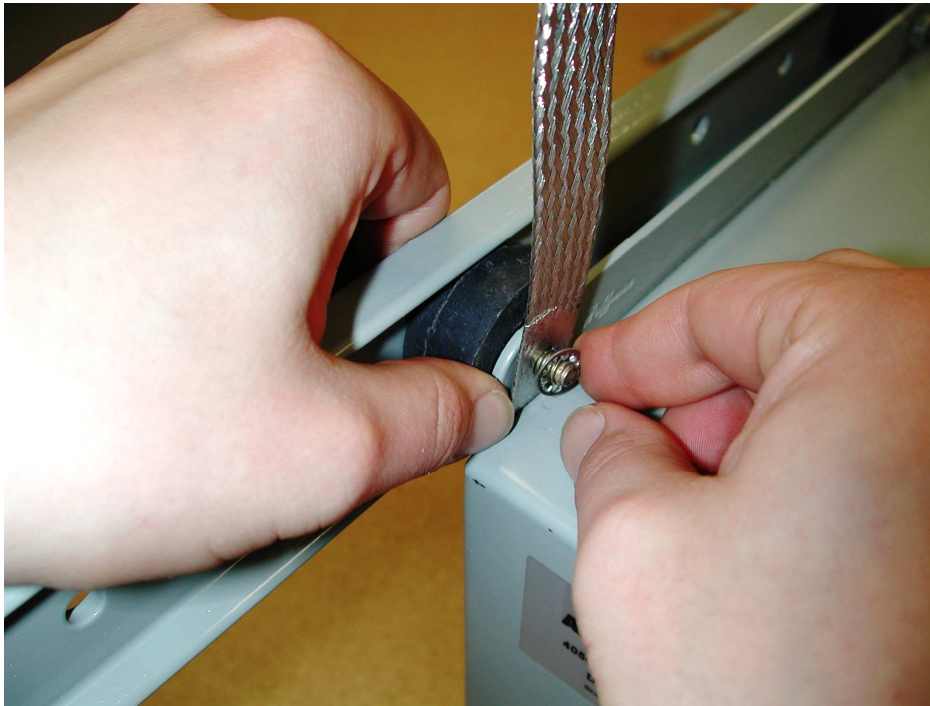
Ground strap kit includes:

Qty 1, 5" Braided Ground Strap (Part # 40287)

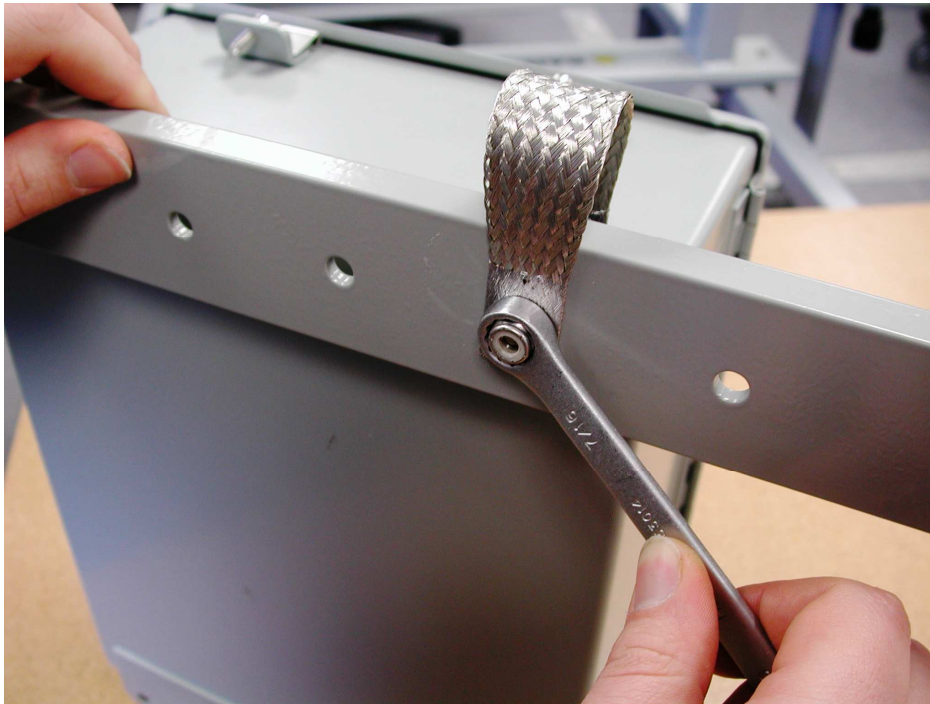
Qty 2, 1/4" Internal Tooth Lock Washer

Tools needed for install:

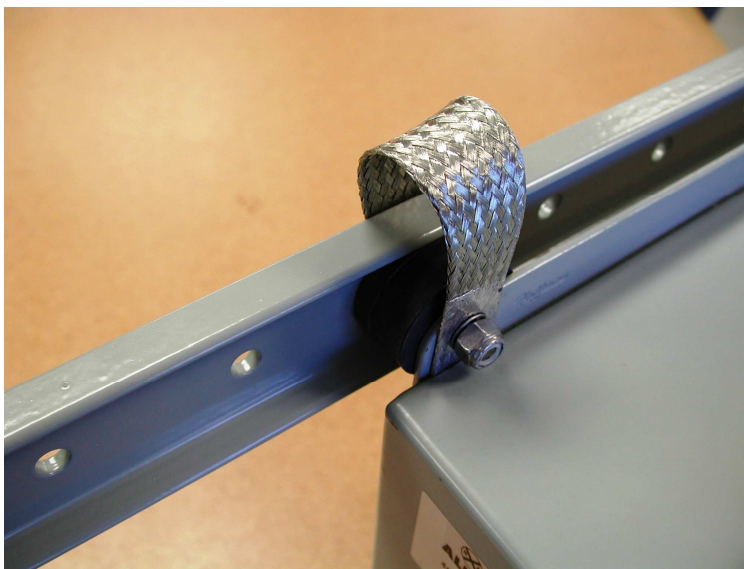
7/16" Wrench



The ground strap for the panel is meant to ground the metal case of the panel to the metal mount that is attached to the front buggy of the tamper. It is recommended that any paint underneath where the strap will be installed be removed for best results. Choose any rubber mount in the corners of the panel. Remove the nylon lock nut from the panel side. Place the ground strap on the stud, then the 1/4" int. tooth lock washer and then replace the lock nut. Tighten the nut with a 7/16" wrench.



Next, remove the nylon lock nut off the back of the mount bar. Loop the ground strap over the bar from the front of the panel and land it on the stud. Place the second 1/4" internal tooth lock washer on the stud and then reinstall the nylon lock nut. Tighten the nut with a 7/16" wrench.



Once the strap is installed correctly, the assembly should look like the photo to the left.

Rail Alignment LLC
Olathe, KS 66062
Ph: 913 334 8439
Fx: 913 780 9815



RS4000 Sensor Ground Strap Kit

Ground strap kit includes:

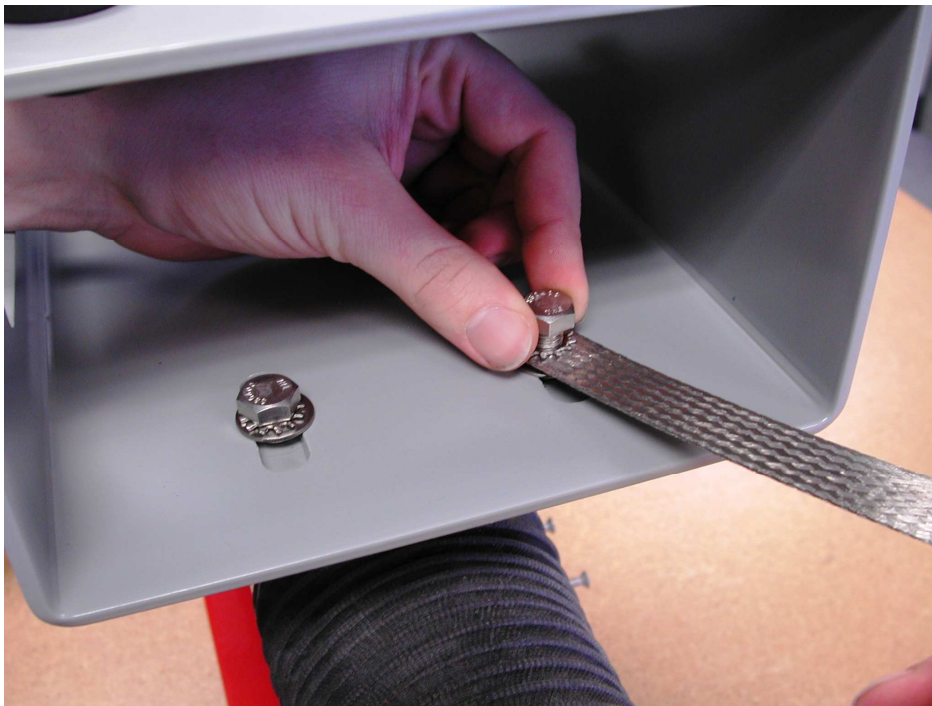
Qty 1, 9" Braided Ground Strap (Part # 40288)

Qty 1, 5/16-18 x 1 1/4" Hex Cap Screw

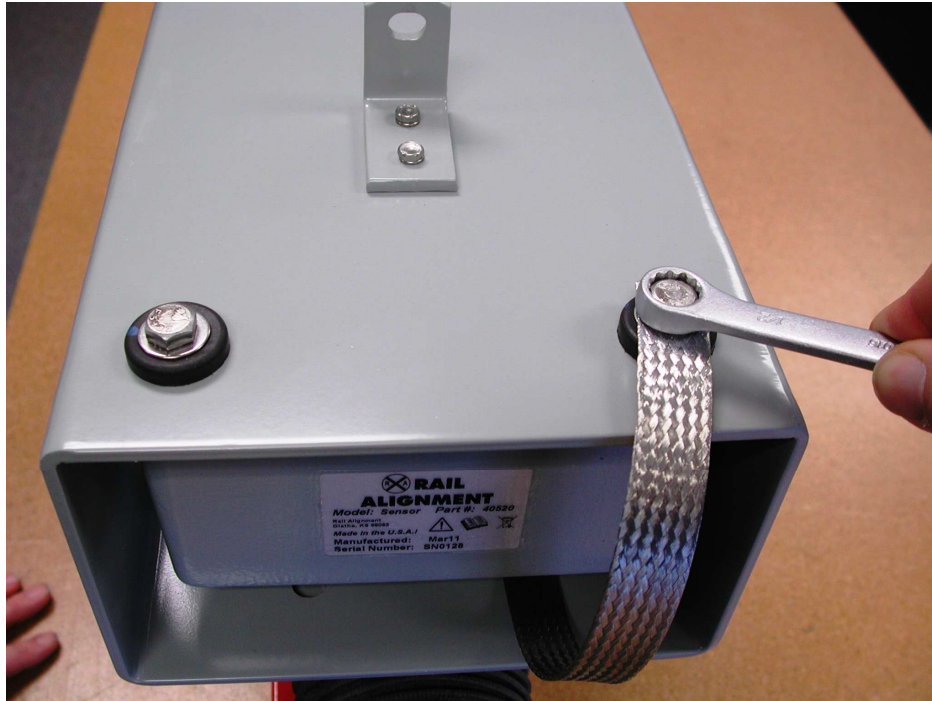
Qty 1, 5/16" Internal Tooth Lock Washer

Tools needed for install:

1/2" and 9/16" Wrenches



If you are installing a ground strap onto an existing system, you will need to remove the sensor from its mount first (1/2" wrench). Then remove the right rear (as you are facing the servo and sensor) bolt and washers from the inside of the sensor mount (9/16" wrench). Remove the flat washer from the bolt, leaving the ext. tooth lock washer. Put the bolt through one end of the ground strap and then reinstall the flat washer. Install the bolt through the mount and back into the servo. Tighten the bolt with a 9/16" wrench ensuring that the strap is hanging straight out of the side of the sensor mount.



Next, install the sensor into the mount. Use the 5/16-18 x 1 1/4" Bolt provided with the kit to hold the strap in right rear position of the sensor as pictured above. Install the 5/16" internal tool lock washer onto the bolt, then the strap, then the flat washer that was originally provided. Tighten all four mounting bolts using a 1/2" wrench.



Once the strap is installed correctly, the assembly should look like the photo to the left.

Rail Alignment LLC
Olathe, KS 66062
Ph: 913 334 8439
Fx: 913 780 9815